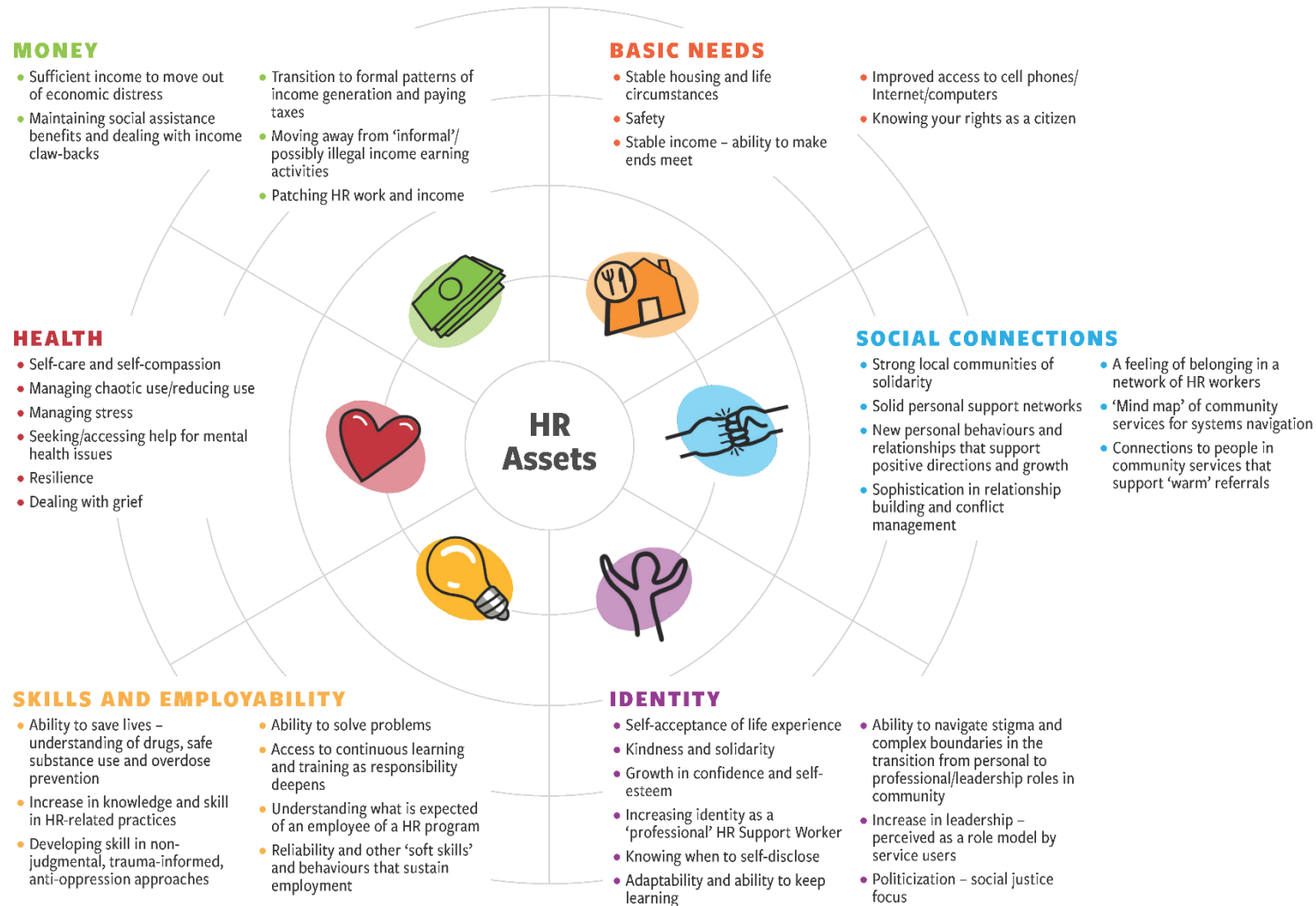


CHRRT Harm Reduction Support Worker (HRSW) CAPACITY ASSET MAP

What strengths are required to play an effective role as a low-threshold Harm Reduction Support Worker (HRSW)?



What is an asset?

Assets are building blocks for your future. They support a positive, well-rounded approach to look at all of your strengths.

Assets are not just about money.

They can be:

- What you know
- Your "lived experience"
- Your personal skills and abilities
- What you have learned through training and on the job

The Sustainable Livelihoods framework has been used with permission of SL Canada



The Community Harm Reduction Response Teams Project is an innovative Harm Reduction (HR) capacity building partnership initiative funded by the Substance Use and Addictions Program (SUAP) of Health Canada, and led by Street Health Community Nursing Foundation.